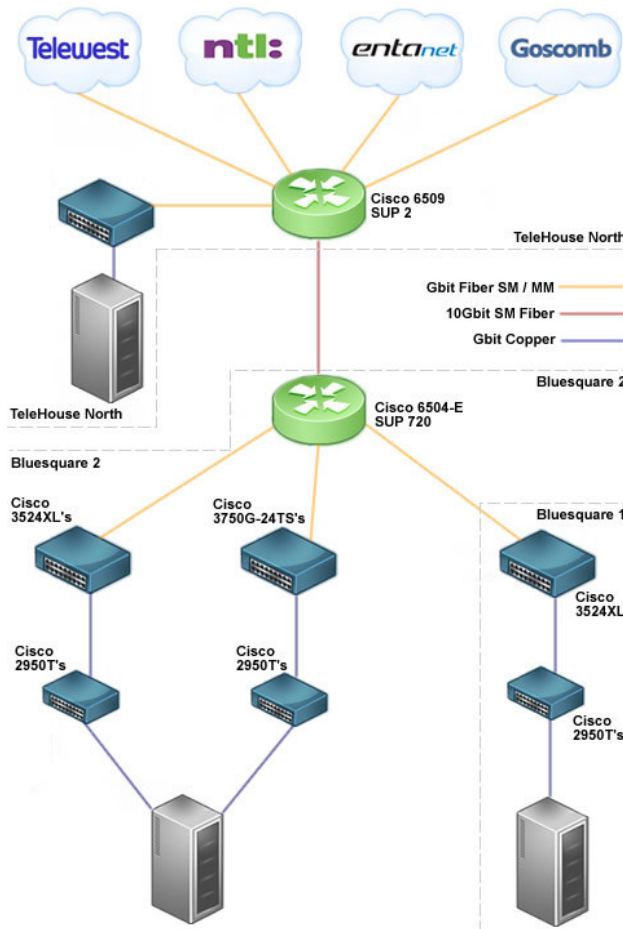


## Netcom's Transit Network (for the techies)

We appreciate that your hosted service, web presence and email are primary functions of your business which is why we have invested in a system which has been designed with stability and robustness in mind.



Netcom uses a multi homed network linked to global transit provider Telewest. Our dedicated servers are connected to a 100mbit connection pointing to our Outer Cisco 2590T's connected at Gbit speeds. This is connected to our switches with Gbit fiber. From there to our Transit provider. This configuration allows us to provide you with a network which is both reliable and fast.

We utilise the hosting network and dedicated servers in the premium facility that is Bluesquare. Unlike most providers our servers are at the heart of Europe's data exchange in London Docklands allowing us to pick and choose from a vast majority of top Tier transit providers such as Telewest, Tiscali, Telia, Level 3 and more.

We monitor our network 24 hours 7 days a week to provide the best hosting around in the UK. We provide 99.9% annual uptime to ensure that our connection is always on day and night. In the unlikely event that any of our primary servers go down we have installed backup servers which will take over service with minimal downtime.

If you have a leased server then access is via VNC and RDP or if you're a hosting / managed hosting client then access to your account is available via the industry standard control panel Plesk. We consider this to be the most reliable system although a choice of control panels are available on request.

If you would like to discuss our systems further please feel free to contact us and we will be happy to answer any queries you may have.

### NETCOM TECHNOLOGIES LTD

250 Gleadless Road, Sheffield, S2 3AH

Sales: 0871 230 0417

Support: 0871 2300417

Fax: 0871 2300418

Email: [sales@netcom.uk.net](mailto:sales@netcom.uk.net)

Web: [www.netcom.uk.net](http://www.netcom.uk.net)